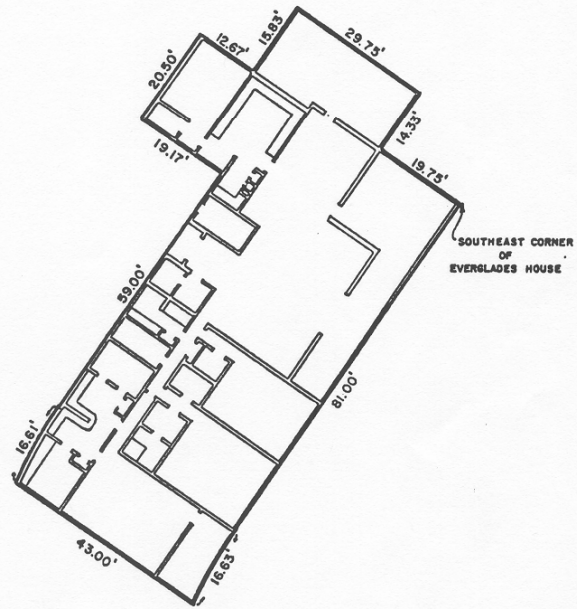


**EXHIBIT A**  
 PAGE 32  
 ANNEXED TO AND MADE A PART OF  
 "DECLARATION"  
 BY CEDAR LANE DEVELOPERS, INC.  
 DATED 24th DAY OF SEPTEMBER, 1964



**EVERGLADES HOUSE CONDOMINIUM  
 FLOOR PLAN  
 PENTHOUSE APARTMENT 3**  
 2200 SOUTH OCEAN DRIVE  
 FORT LAUDERDALE, FLORIDA  
 FOR  
**CEDAR LANE DEVELOPERS, INC.**

McLAUGHLIN ENGINEERING CO.  
 400 N.E. 3RD AVENUE  
 FORT LAUDERDALE, FLORIDA

DRAWN: L.P.H.	DATE: 9-24-64	SCALE: 3/8" = 1'-0"
CHECKED: D.F.S	JOB NO. D-4832	DWG. NO. C.E. 10