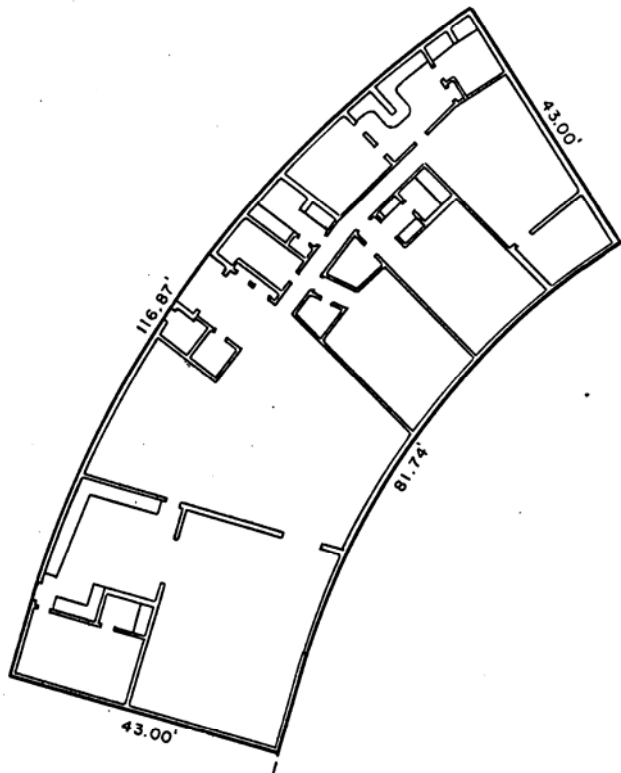


EXHIBIT A

PAGE 31

ANNEXED TO AND MADE A PART OF
"DECLARATION"
BY CEDAR LANE DEVELOPERS, INC.
DATED 18th DAY OF JUNE, 1965



SOUTHWEST CORNER OF
EVERGLADES HOUSE

EVERGLADES HOUSE CONDOMINIUM FLOOR PLAN PENTHOUSE APARTMENT 2 2000 SOUTH OCEAN DRIVE FORT LAUDERDALE, FLORIDA FOR CEDAR LANE DEVELOPERS, INC.		
McLAUGHLIN ENGINEERING CO. 400 N.E. 3RD AVENUE FORT LAUDERDALE, FLORIDA		
DRAWN: L.P.H.	DATE: 6/18/65	SCALE: 3/8" = 1'-0"
CHECKED: D.F.b	JOB NO. D-4832	DWG. NO. C.E. 10