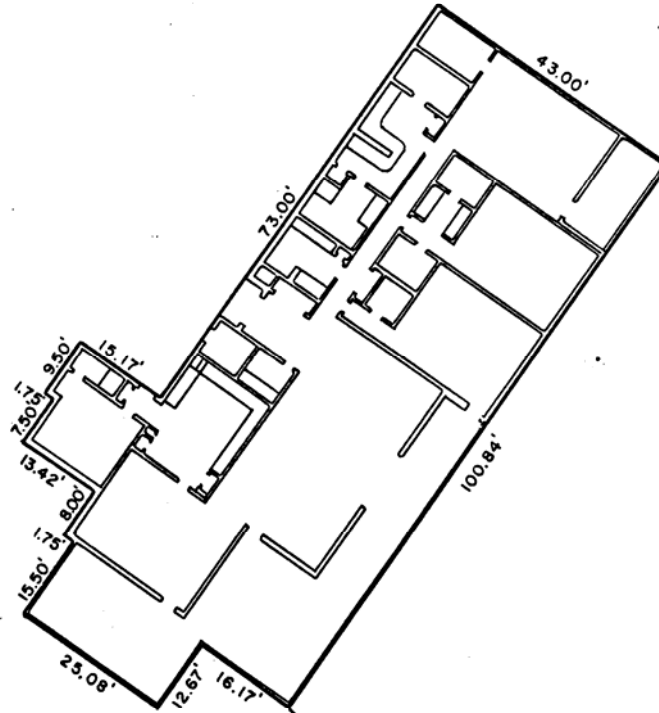


EXHIBIT A

PAGE 30

ANNEXED TO AND MADE A PART OF
"DECLARATION"
BY CEDAR LANE DEVELOPERS, INC.
DATED 18th DAY OF JUNE, 1965



SOUTHWEST CORNER OF
EVERGLADES HOUSE

EVERGLADES HOUSE CONDOMINIUM
FLOOR PLAN
PENTHOUSE APARTMENT I
2000 SOUTH OCEAN DRIVE
FORT LAUDERDALE, FLORIDA
FOR
CEDAR LANE DEVELOPERS, INC.

McLAUGHLIN ENGINEERING CO.
400 N.E. 3RD AVENUE
FORT LAUDERDALE, FLORIDA

DRAWN: L.P.H.	DATE: 6/18/65	SCALE: 3/4" = 1'-0"
CHECKED: D.F.B.	JOB NO. D-4832	DWG. NO. C.E. 10