

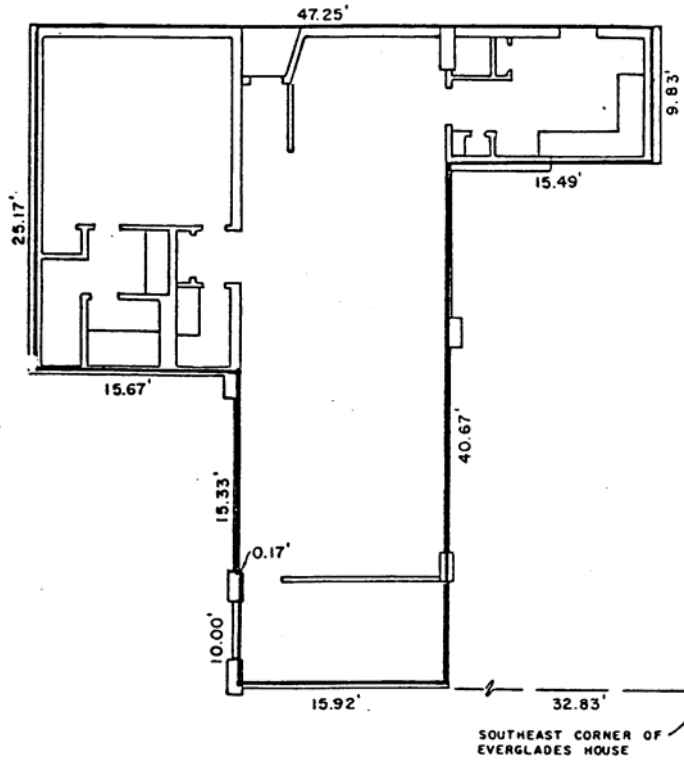
# EXHIBIT A

PAGE 28

ANNEXED TO AND MADE A PART OF  
"DECLARATION"

BY CEDAR LANE DEVELOPERS, INC.

DATED 18th DAY OF JUNE, 1965



EVERGLADES HOUSE CONDOMINIUM  
TYPICAL FLOOR PLAN  
APARTMENT 9  
2000 SOUTH OCEAN DRIVE  
FORT LAUDERDALE, FLORIDA  
FOR  
CEDAR LANE DEVELOPERS, INC.

MCLAUGHLIN ENGINEERING CO.  
400 N.E. 3RD AVENUE  
FORT LAUDERDALE, FLORIDA

DRAWN: L.P.H.	DATE: 6/18/65	SCALE: 3/32" = 1'-0"
CHECKED: D.F.B.	JOR NO. 0-4832	DWG. NO. C E 10