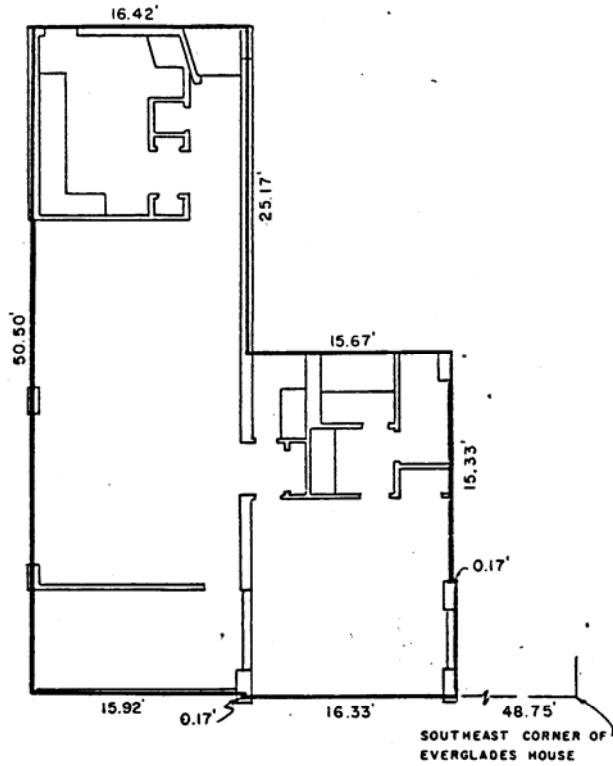


EXHIBIT A

PAGE 27

ANNEXED TO AND MADE A PART OF
"DECLARATION"
BY CEDAR LANE DEVELOPERS, INC.
DATED 18th DAY OF JUNE, 1965



EVERGLADES HOUSE CONDOMINIUM
TYPICAL FLOOR PLAN
APARTMENT 8
2000 SOUTH OCEAN DRIVE
FORT LAUDERDALE, FLORIDA
FOR
CEDAR LANE DEVELOPERS, INC.

McLAUGHLIN ENGINEERING CO.
400 N.E. 3RD AVENUE
FORT LAUDERDALE, FLORIDA

DRAWN: L.P.H.	DATE: 6/18/65	SCALE: $\frac{3}{32}'' = 1'-0''$
CHECKED: D.F.H.	JOB NO. D-4832	DWG. NO. C.E. 10