

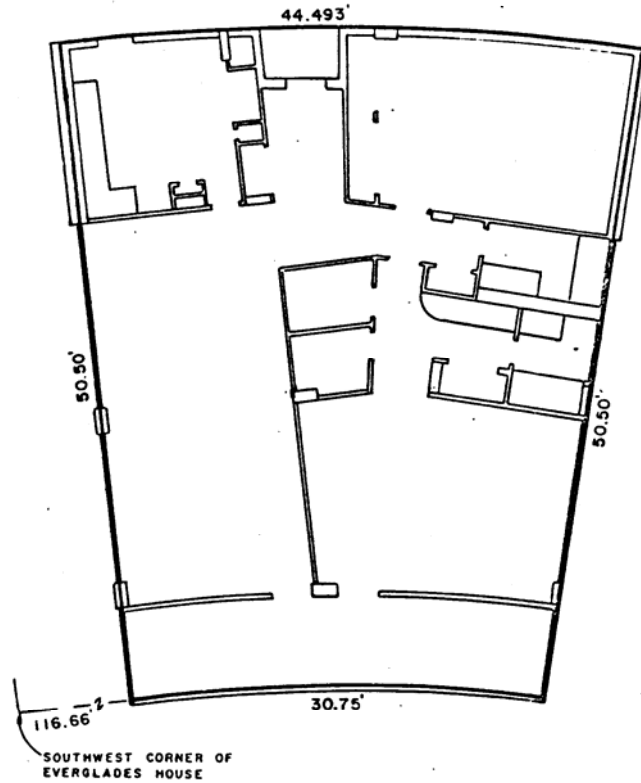
EXHIBIT A

PAGE 24

ANNEXED TO AND MADE A PART OF
"DECLARATION"

BY CEDAR LANE DEVELOPERS, INC.

DATED 18th DAY OF JUNE, 1965



SOUTHWEST CORNER OF
EVERGLADES HOUSE

EVERGLADES HOUSE CONDOMINIUM TYPICAL FLOOR PLAN

APARTMENT 5

2000 SOUTH OCEAN DRIVE
FORT LAUDERDALE, FLORIDA

FOR

CEDAR LANE DEVELOPERS, INC.

McLAUGHLIN ENGINEERING CO.

400 N.E. 3RD AVENUE
FORT LAUDERDALE, FLORIDA

DRAWN: L.P.H.	DATE: 6/18/65	SCALE: $\frac{3}{32}'' = 1'-0''$
CHECKED: D.F.B.	JOB NO. D-4832	DWG. NO. C.E. 10