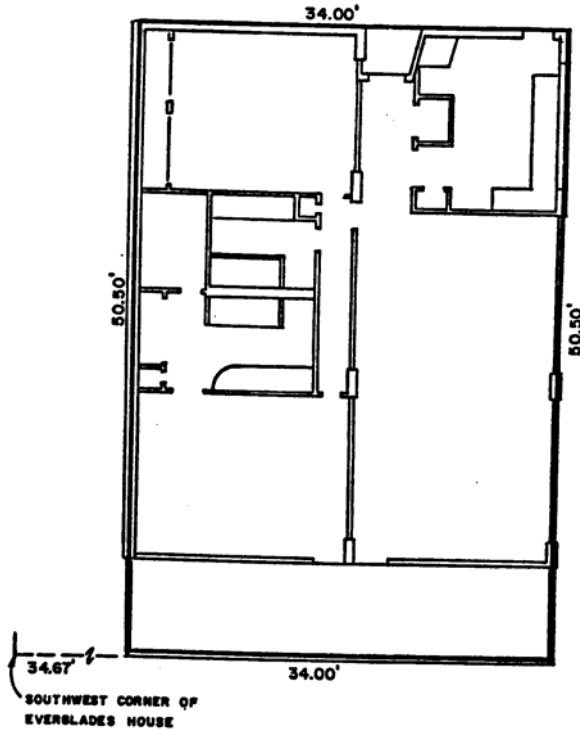


EXHIBIT A

PAGE 21

ANNEXED TO AND MADE A PART OF
"DECLARATION"

BY CEDAR LANE DEVELOPERS, INC.
DATED 24th DAY OF SEPTEMBER, 1964



EVERGLADES HOUSE CONDOMINIUM
TYPICAL FLOOR PLAN
APARTMENT 2
2200 SOUTH OCEAN DRIVE
FORT LAUDERDALE, FLORIDA
FOR
CEDAR LANE DEVELOPERS, INC.

McLAUGHLIN ENGINEERING CO.
400 N.E. 3RD AVENUE
FORT LAUDERDALE, FLORIDA

DRAWN: L.P.H.	DATE: 9-24-64	SCALE: 1/8" = 1'-0"
CHECKED: D.F.B.	JOB NO. D-4832	DWG. NO. C.E. 10