

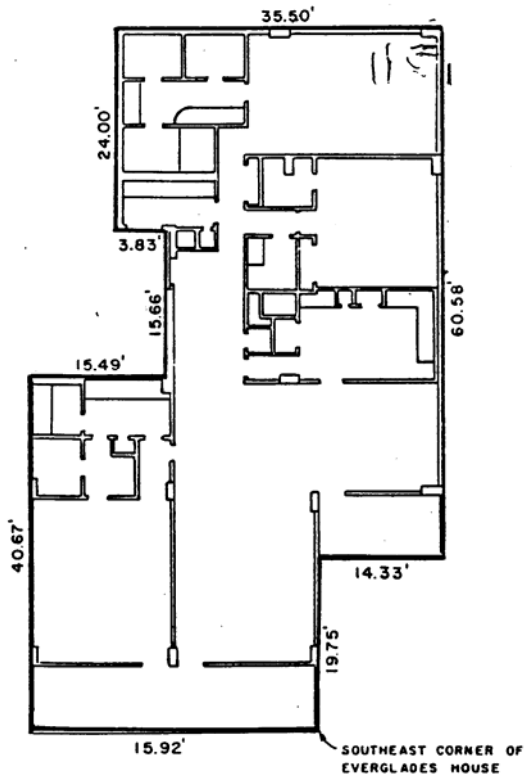
EXHIBIT A

PAGE 29

ANNEXED TO AND MADE A PART OF
"DECLARATION"

BY CEDAR LANE DEVELOPERS, INC.

DATED 18th DAY OF JUNE, 1965



EVERGLADES HOUSE CONDOMINIUM
TYPICAL FLOOR PLAN
APARTMENT 10
2000 SOUTH OCEAN DRIVE
FORT LAUDERDALE, FLORIDA
FOR
CEDAR LANE DEVELOPERS, INC.

McLAUGHLIN ENGINEERING CO.
400 N.E. 3RD AVENUE
FORT LAUDERDALE, FLORIDA

DRAWN: L.P.H.	DATE: 6/18/65	SCALE: 1/16" = 1'-0"
CHECKED: D.F.B.	JOB NO. U-4832	DWG. NO. CE 10