

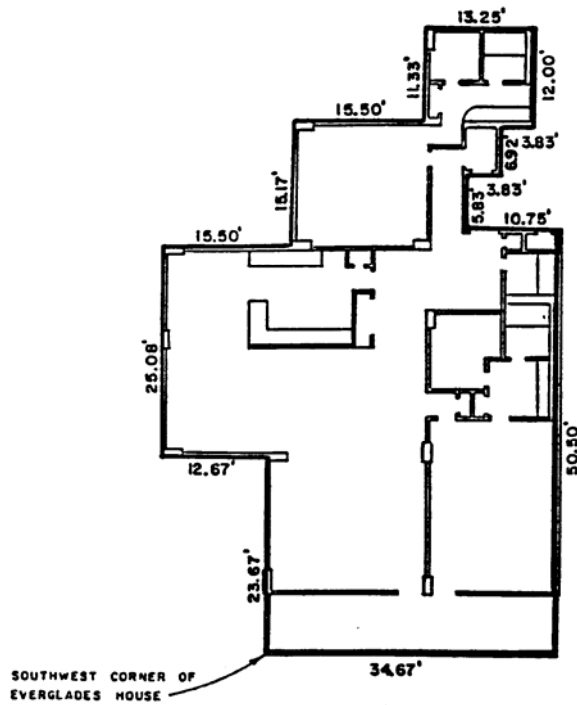
# EXHIBIT A

PAGE 20

ANNEXED TO AND MADE A PART OF  
"DECLARATION"

BY CEDAR LANE DEVELOPERS, INC.

DATED 24th DAY OF SEPTEMBER, 1964



EVERGLADES HOUSE CONDOMINIUM  
TYPICAL FLOOR PLAN  
APARTMENT I  
2200 SOUTH OCEAN DRIVE  
FORT LAUDERDALE, FLORIDA  
FOR  
CEDAR LANE DEVELOPERS, INC.

McLAUGHLIN ENGINEERING CO.  
400 N.E. 3RD AVENUE  
FORT LAUDERDALE, FLORIDA

DRAWN: L.R.H. DATE: 9-24-64 SCALE: 1/16"=1'-0"  
CHECKED: D.F.B. JOB NO. D-4832 DWG. NO. 01-0